

DocuPrint C2200 Colour Printer

Fast, affordable,
business-class colour
printing



A colour laser printer with all the right features.

Fleet performance, network ready, and very affordable. The compact, hardworking Fuji Xerox DocuPrint C2200 delivers uncompromising quality and a full-range of office-friendly features ideal for busy workgroups.



Fits your office and budget

Maximise office productivity with minimum overhead. The DocuPrint C2200 proves that efficiency need not be expensive, offering a variety of big-printer advantages seldom found on other printers in its class.

- **Fast, trouble-free installation** gets you up and running without time-consuming and expensive support calls.
- **Economical, high-yield toner cartridges** reduce per page cost and minimise down time for replacement.
- **A low energy consumption rating** makes the DocuPrint C2200 as green as it is economical.
- **Administration tools** provide intuitive, browser-based configuration of printer and user settings.

Crisp, professional-looking documents

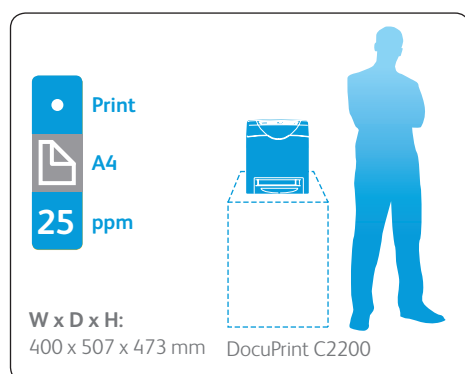
High-resolution and superior colour combine to give your documents a polished look. Photos come to life with breathtaking clarity, while charts and graphs command special attention — a nice touch for the office that wants to look its best.

- **Razor-sharp printing** at 600 x 600 multi-level dpi produces crystal-clear text, photos, and graphics. Even small text and super-fine lines display exceptional sharpness.
- **Rich, vibrant colour** is yours thanks to Fuji Xerox's unique EA-HG toner. The small, uniformly shaped toner particles deliver breathtaking results.
- **PCL6 and True Adobe® PostScript® 3™** lets you choose the right driver for the application, giving you increased control over print operations.

Performance-based functionality

Designed to satisfy the demanding needs of busy workgroups, the DocuPrint C2200 has the power for any office. Whatever the task, outstanding speed and responsiveness keep your office humming at peak productivity.

- **Lightning-quick 25 ppm output** and a fast, full-colour first-page-out-time of less than 17 seconds reduce wait times and eliminate bottlenecks at the printer.
- **A 400 MHz processor and 256 MB RAM** (expandable to 768 MB) make short work of even complex, graphics-heavy documents.
- **Optional duplex print unit and 550-sheet feeder** vastly expand output capabilities; excellent additions for printing long documents and decreasing printer downtime when the paper runs out.



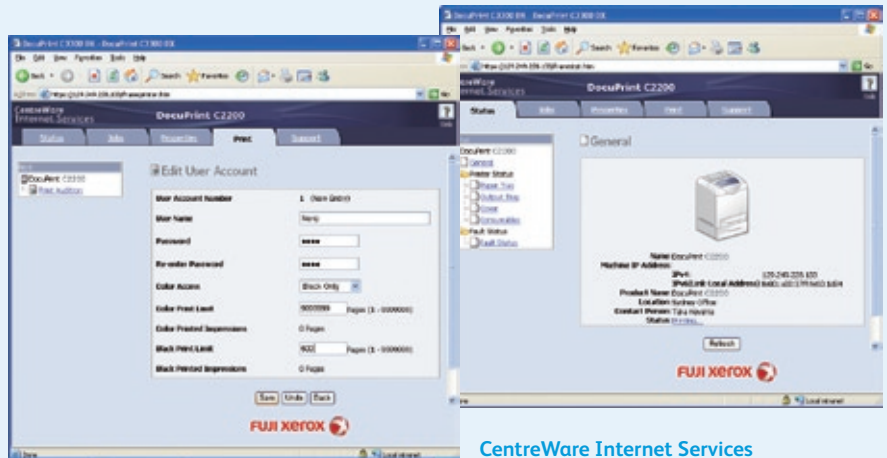
Effortless maintenance and administration

The DocuPrint C2200 is a joy for users and administrators alike. Replacing consumables is fast and straightforward while printer and user administration is point-and-click simple.



Easy front access

Consumables such as toner, fuser, and belt unit are all located under the top cover and easily accessed from the front. This intelligent design also reduces the space needed for installation.



Fuji Xerox Auditor

Keep track of printer usage and set user limits with this comprehensive set of management tools for network administrators.

CentreWare Internet Services

Simplify installation and configuration as well as obtain up-to-the-minute status reports with this browser-based software. Automatic e-mail alerts notify administrators or users of events that require attention, like low toner levels.

Comprehensive networking

Versatile connectivity and a host of privacy features make the DocuPrint C2200 the wise choice for today's complex, security conscious environments.

- **Multiple interfaces** allow connection to your existing office LAN via 100Base-TX/10Base-T or directly to a computer via USB 2.0.
- **Solid security features** provide everything you need to protect confidential data; both over office LANs and the Internet. Tools include IPv6+IPSec, IEEE802.1X authentication*, and SNMPv3 (for TCP/IP).
- **Multi-platform compatibility** extends not only to Windows and Macintosh networks but also various versions of Linux.
- **Full-featured, Citrix XenApp™ and SAP** R/3®** enterprise printing solutions can be easily rolled out using ApeosWare Device Type.

* Requires the optional hard disk.

** Only English language Device Types provided



Environmentally conscious

Fuji Xerox shares your concern for the earth, and strives to minimise the environmental impact of all our activities. Our environmental responsibility covers the entire life of the DocuPrint C2200, from manufacturing and operation, to production and recycling of consumables.

Oil-free and reduced CO₂ emissions

EA-HG toner used in the DocuPrint C2200 does not contain oil, helping to conserve this precious resource. Additionally, the amount of CO₂ emitted during manufacturing is reduced up to 35%, further decreasing environmental burden.

Power saving operation

The DocuPrint C2200 consumes only 9 W* of electricity per hour during sleep mode and has a highly efficient TEC (typical electricity consumption) of 2.351 kWh per week.

* For the 220-volt version, 7 W for the 110-volt version.

Forest-friendly

Packaging for high-capacity (9,000-page) toner cartridges consumes 20% less paper than packaging for low-capacity cartridges used by some of our competitors. Like Fuji Xerox printing paper, this forest-friendly packaging utilises recycled paper.

Certified energy efficient

The DocuPrint C2200 carries International Energy Star certification. Energy Star is a voluntary labelling program designed to identify and promote energy-efficient products to reduce greenhouse gas emissions.



Specifications of DocuPrint C2200

Print Functions

Print Speed	Simplex	Up to 25 ppm colour and black & white (A4)
	Duplex*	Up to 17 ipm colour and black & white (A4)
Print Resolution	600 × 600 dpi (multi-level)	
Printer Technology	Single Pass Laser Printer	
First-Page-Out Time	Less than 17 seconds (colour) / 14 seconds (black & white)	
Warm-up Time	Less than 30 seconds	
Memory (std/max)	256 MB/768 MB (256 MB + 512 MB)	
Processor	400 MHz	
PDL	PCL6, PCL5e, HBPL (for scanner), FX-PDF, XPS, Adobe® PostScript® 3™	
Hard Disk (optional)	40 GB	
Duplex	Optional (See Accessories)	
Connectivity	USB 2.0, Ethernet 10/100Base-TX	
Operating System	Windows® 2000/XP (32 / 64-bit) / Vista® (32 / 64-bit) / Server® 2003 (32 / 64-bit) / Server® 2008 (32 / 64-bit), Mac OS X (10.3 - 10.5), Red Hat® Enterprise Linux® WS v.4, SUSE® Linux® 10.0, Citrix XenApp™, SAP® R/3®	
Input Paper Size	Bypass Tray: A4, B5, A5, Legal (8.5 × 14"), Folio (8.5 × 13"), Letter (8.5 × 11"), Executive (7.25 × 10.5"), envelopes (Monarch, Com 10, DL, C5), Custom (width 76.2 to 220.0 mm, length 98.4 to 355.6 mm) Paper Tray: A4, B5, A5, Legal (8.5 × 14"), Folio (8.5 × 13"), Letter (8.5 × 11"), Executive (7.25 × 10.5"), Custom (width 148.0 to 215.9 mm, length 210.0 to 355.6 mm)	
Input Paper Weight	Bypass Tray: Lightweight: 60 gsm; Heavyweight: 216 gsm Paper Tray: Lightweight: 60 gsm; Heavyweight: 216 gsm	
Media Input Capacity ¹	Standard	Paper tray: 250 sheets, Bypass tray: 150 sheets
	Optional	550-sheet feeder: 550 sheets
Media Output Capacity ¹	250 sheets (A4) face down	
Dimensions (W x D x H)	400 x 507 x 473 mm	
Weight	24.4 kg	
Power Supply	220 - 240 VAC, 50/60 Hz, 5 A (AP/Korea/China); 110 - 127 VAC, 50/60 Hz, 11 A (Taiwan)	
Power Consumption	Maximum: 900 W; Printing: 420 W; Standby: 95 W, Sleep: 9 W or less (220-240 V), 7 W or less (110 V)	
Environment	Temperature: 10 °C - 32 °C (when printing); Humidity: 15% - 85% (when printing);	
Noise Levels	Standby mode: Less than 4.0 B Printing mode: Less than 6.9 B (7.4 B ^{††})	
Warranty	One year on-site warranty [#]	

* Requires optional duplex unit.

¹ Based on 64 gsm plain paper.

^{††} When using optional memory, hard disk unit, duplex unit and 550 sheet feeder.

[#] Warranty varies by location. For details please check with your local Fuji Xerox Printers office (AUS: 1800 811 177, NZ 0800 449 177).



Descriptions in this material, product specifications and/or appearances are subject to change without prior notice due to improvements. Please note that the product colour appears differently from the actual colour as a result of properties of papers or printing ink. Windows and Windows NT are registered trademarks of Microsoft Corporation. NetWare is a registered trademark of Novell, Inc. in the United States. Macintosh, Mac OS and Ether Talk are trademarks of Apple Computer, Inc. PostScript is a registered trademark of Adobe Systems Incorporated in each country. HP-GL is a registered trademark of Hewlett Packard Company. BMLinks is a trademark of the Japan Business Machine and Information System Industries Association (JBMIA). Other company names or product names are registered trademarks or trademarks of each company.

Print Functions

Print Features	Secure print,* Proof print,* Booklet printing, Covers, Separators, Transparency separators, Skip blank pages, N-up, watermarks, Poster printing, Banner sheets, RAM collation*, Fit to page	
Device Management	CentreWare IS Embedded Web Server, CentreWare Web, Status Messenger, Email alerts	
Duty Cycle**	Recommended	5,000 pages/images per month
	Maximum	70,000 pages/images per month

* Requires a minimum of 256MB RAM

**Duty Cycle is estimated based on A4 paper size and 5% coverage. Please note that exceeding the recommended monthly duty cycle may reduce the life of the device.

Consumables

All consumables are Customer Replacable Units

Black (up to 6,000 pages*)	CT350670	
Cyan (up to 4,000 pages*)	CT350671	
Magenta (up to 4,000 pages*)	CT350672	
Yellow (up to 4,000 pages*)	CT350673	
Black (up to 9,000 pages*)	CT350674	
Cyan (up to 9,000 pages*)	CT350675	
Magenta (up to 9,000 pages*)	CT350676	
Yellow (up to 9,000 pages*)	CT350677	
Periodic Replacement Items	Fuser Unit [†] 220 V (up to 100,000 pages ^{††})	EL300729
	Fuser Unit [†] 110 V (up to 100,000 pages ^{††})	EL300728
	Belt Unit (up to 100,000 pages ^{††})	EL300727

* Average standard pages. Declared yield in accordance with ISO/IEC 19798. Yield will vary depending on image, area, coverage and print mode. Printer is shipped with one starter print cartridge with an average yield of 6,000 pages for black and 4,000 pages for cyan, magenta and yellow.

[†] Includes three feed rollers in the standard tray and three feed rollers in the optional tray.

^{††} Declared yield based on an average job size of three letter- or A4-size pages. Yield will vary based on job length, media size, media type and orientation.

Accessories (optional)

550-sheet Feeder	A4, B5, A5, 148.5 x 210.0 to 215.9 x 355.6 mm Light: 60 gsm; Heavy: 216 gsm	EL300629
Duplex Unit	A4, B5, A5, Legal (8.5 × 14"), Folio (8.5 × 13"), Letter (8.5 × 11"), Executive (7.25 × 10.5"), 148.5 x 210.0 to 215.9 x 355.6 mm Lightweight: 60 gsm; Heavyweight: 163 gsm	EL300630
Hard Disk (40 GB)		EL300730
512 MB Memory		EL300633



<Reproduction Prohibitions> Please note that reproduction of the following is prohibited by law: Domestic and overseas bank notes and coins, government-issued securities, national bonds and local bond certificates. Unused postage stamps and post cards. Certificate stamps stipulated by law. The reproduction of works for copyright purposes (literary works, musical works, paintings, engravings, maps, cinematographic works, photographic works, etc.) is prohibited except when they are reproduced personally, at home or within limited range according to the above. This product is equipped with an anti-counterfeit feature. This feature is not intended to prevent illegal reproduction. Be extremely careful about the management of equipment used.



For Your Safe Use

Before using the product, read the Instruction Manual carefully for proper use. Use the product with an appropriate adequate power source and voltage displayed. Be sure to establish a ground. In the case of a failure or short circuit, an electric shock may result.

For more information or for your nearest authorised Fuji Xerox Printers reseller, visit our website or call:

Australia 1300 793 769
New Zealand 0800 993 769

www.fujixeroxprinters.com.au
www.fujixeroxprinters.co.nz

