

NEC MultiSync® PA Series

24" and 27" widescreen professional LCD displays ideal for graphics applications

Designed with key features for the graphics and photography professional, the 24" NEC MultiSync PA241W and 27" PA271W are smart investments for your desktop, while ensuring accurate, consistent and repeatable color performance.

- Best-in-class 10-bit active matrix IPS LCD technology with wide viewing angle and wide color gamut provides optimum performance for displaying color images
- XtraView+™ technology provides for the widest viewing angles available (up to 178°) with minimal off-angle color shift
- Wide color gamut with more than 97% coverage of AdobeRGB, more than 92% coverage of NTSC [1953] and accurate 100% sRGB coverage
- Internal 14-bit programmable 3D lookup tables (LUTs) allow the display of 1.07 billion colors out of a palette of 4.3 trillion* for lossless color and smooth images and hardware calibration
- DisplaySync Pro™ controls two computers with only one keyboard and mouse
- AmbiBright™ ambient light sensor automatically adjusts the display's brightness based on lighting conditions
- Four-way ergonomic stand boasts pivot, swivel, tilt and height-adjustment up to 150mm to maximize your viewing comfort
- MultiProfiler software loads any ICC profile directly into the monitor for optimal color space matching
- Color Vision Emulation allows a real-time preview of Type P/D/T color vision problems in support of Color Universal Design

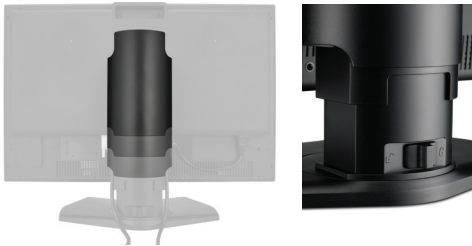
* with 10-bit DisplayPort input. 16.7 million colors out of 65 billion with DVI-D input.



The PA Series' design allows you to adjust the display to your exact ergonomic preferences. In addition to tilt and swivel functionality, the height adjusts up to 150mm, and the displays pivot between landscape to portrait orientations.



The PA Series stand, which is smaller in size compared to its predecessor, features improved cable management and a lock function for easier, safer portability.



Available as an option for the PA Series, the SpectraView_{II}TM system uses a color sensor to take color measurements of the display screen during calibration. The software analyzes these measurements and sends color adjustment commands directly to the display monitor. This means that color adjustments are made in the monitor rather than in the video graphics adapter, resulting in full use of the number of colors available on the graphics adapter and a much brighter image with the maximum possible color, resolution and fidelity.



Model	MultiSync PA241W	MultiSync PA271W	
Display	Viewable Size Image: 24.1" Pixel Pitch: 0.27mm Pixels Per Inch: 93 @ native resolution Brightness (typical): 360 cd/m ² Contrast Ratio (typical): 1000:1 Viewing Angle (typical): 178° Vert., 178° Hor. (89U/89D/89L/89R) @ CR > 10 Response Time (typical): 8ms Rapid Response™ (Gray-to-Gray) Panel Bit Depth: 14-bit internal 3D LUTs, displays 1.07 billion colors out of 4.3 trillion (10-bit DisplayPort input); 16.7 million colors out of 1.05 billion color palette (DVI-D input)	27" 0.23mm 109 @ native resolution 300 cd/m ² 1000:1 178° Vert., 178° Hor. (89U/89D/89L/89R) @ CR > 10 7ms Rapid Response™ (Gray-to-Gray) 14-bit internal 3D LUTs, displays 1.07 billion colors out of 4.3 trillion (10-bit DisplayPort input); 16.7 million colors out of 1.05 billion color palette (DVI-D input)	
Color Gamut*	Adobe RGB** Coverage/Size: 98.1% / 107% NTSC Coverage/Size: 93.2% / 102.2% sRGB Coverage/Size: 100% / 144.3%	97.1% / 107.2% 92.6% / 102.5% 100% / 144.7%	
Synchronization Range	Horizontal: 31.5 - 93.8/118.4 kHz (Analog) / 31.5 - 91.9/118.4 kHz (Digital) Vertical: 50 - 85 Hz	31.5 - 93.8 KHz (Digital) 50 - 87 Hz	
Input Signal	Video Sync: Analog RGB 0.7 Vp-p/75 Ohms Separate sync: TTL Level (Positive/Negative) Composite sync: TTL Level (Positive/Negative) Composite sync on green: (0.3Vp-p negative, 0.7Vp-p positive)	NA	
Inputs	DisplayPort, DVI-D (2) & VGA 15-pin D-sub	DisplayPort & DVI-D (2)	
Resolutions Supported (Analog/Digital)	720 x 400 @ 70-85 Hz 640 x 480 @ 60-85 Hz 800 x 600 @ 56-85 Hz 832 x 624 @ 75 Hz 1024 x 768 @ 60-85 Hz 1152 x 864 @ 70-85 Hz 1152 x 870 @ 75 Hz 1280 x 960 @ 60 Hz 1280 x 1024 @ 60-85 Hz 1400 x 1050 @ 60-75 Hz 1440 x 900 @ 60-85 Hz 1600 x 1200 @ 60-75 Hz 1920 x 1200 @ 60 Hz 1024 x 1280 @ 60 Hz 1200 x 1920 @ 60 Hz 720 x 480p @ 60 Hz 720 x 576p @ 50 Hz 1280 x 720p @ 50-60 Hz 1920 x 1080p @ 50-60 Hz	640 x 400 @ 70-85 Hz 720 x 400 @ 70-85 Hz 640 x 480 @ 60-85 Hz 800 x 600 @ 56-85 Hz 832 x 624 @ 75 Hz 1024 x 768 @ 60-85 Hz 1152 x 864 @ 70-85 Hz 1152 x 870 @ 75 Hz 1280 x 960 @ 60 Hz 1280 x 1024 @ 60-85 Hz 1400 x 1050 @ 60-75 Hz 1440 x 900 @ 60-85 Hz 1600 x 1200 @ 60-75 Hz 1920 x 1200 @ 60 Hz 1024 x 1280 @ 60 Hz 1200 x 1920 @ 60 Hz 720 x 480p @ 60 Hz 720 x 576p @ 50 Hz 1280 x 720p @ 50-60 Hz 1920 x 1080p @ 50-60 Hz	DIGITAL ONLY 640 x 400 @ 70-85 Hz 720 x 400 @ 70-85 Hz 640 x 480 @ 60-85 Hz 800 x 600 @ 56-85 Hz 832 x 624 @ 75 Hz 1024 x 768 @ 60-85 Hz 1024 x 1280 @ 60 Hz 1152 x 864 @ 70-85 Hz 1152 x 870 @ 75 Hz 1280 x 960 @ 60 Hz 1280 x 1024 @ 60-85 Hz 1400 x 1050 @ 60-75 Hz 1440 x 900 @ 60-85 Hz 1600 x 1200 @ 60 Hz 1600 x 900 @ 60 Hz 1600 x 1200 @ 60 Hz 1920 x 1200 @ 60 Hz 2560 x 1440 @ 60 Hz 720 x 480p @ 60 Hz 720 x 576p @ 50 Hz 1280 x 720p @ 50-60 Hz 1920 x 1080p @ 50-60 Hz
Native Resolution	1920 x 1200	2560 x 1440	
Additional Features	USB hub (2 up/3 down) with DisplaySync Pro, Picture-in-Picture, Side-by-Side, ICC Profile Emulation, Color Vision Emulation, 14-bit 3D gamma, Adobe RGB, DICOM, ColorComp, overdrive, ECO Mode, cable management, touch-enabled, tilt, swivel, pivot, 150mm height-adjustable stand with locking base, No Touch Auto Adjust, quick release stand, VESA Mount, TCO 5.0	USB hub (2 up/3 down) with DisplaySync Pro, Picture-in-Picture, Side-by-Side, ICC Profile Emulation, Color Vision Emulation, 14-bit 3D gamma, Adobe RGB, DICOM, ColorComp, overdrive, ECO Mode, cable management, touch-enabled, tilt, swivel, pivot, 150mm height-adjustable stand with locking base, quick release stand, VESA Mount, TCO '03	
Touch-Capable	Designed for integration	NA	
Voltage Rating	AC 100-120V / AC 220-240V	AC 100-120V / AC 220-240V	
Power Consumption (typical)	On: 95W (without USB active) / 114W (with USB active) Power Savings Mode: 1W (without USB active) / 15W (with USB active)	117W (without USB active) / 131W (with USB active) 1.4W (without USB active) / 11W (with USB active)	
Dimensions (WxHxD)	Net (with stand): 21.9 x 14.9-20.8 x 9 in. / 556.8 x 378-528 x 227.6mm Net (without stand): 21.9 x 14.3 x 3.3 in. / 556.8 x 362.4 x 85mm	25.2 x 15.6-21.5 x 9.3 in. / 640.4 x 396.2-546.2 x 235.5mm 25.2 x 14.9 x 3.3 in. / 640.4 x 378.6 x 85mm	
Net Weight	(with stand): 23.4 lbs. / 10.6 kg (without stand): 16.3 lbs. / 7.4 kg	30 lbs. / 13.6 kg 21.2 lbs. / 9.6 kg	
VESA Hole Configuration Specifications	100 x 100mm, 200 x 100mm	100 x 100mm	
Environmental Conditions	Operating Temperature: 5-35° C / 41-95° F Operating Humidity: 30-80% Operating Altitude: 3048m / 10,000 ft. Storage Temperature: -10-60° C / 14-140° F Storage Humidity: 10-85% Storage Altitude: 12,192m / 40,000 ft.	5-35° C / 41-95° F 30-80% 3048m / 10,000 ft. -10-60° C / 14-140° F 10-85% 12,192m / 40,000 ft.	
Safety Standards	UL / C-UL, CE, Gost/PCT, PSB, CCC, NOM, TUV GS, FCC Class B/Canadian DOC, C-tick, MPR III, VCCI (class 2)	UL / C-UL, CE, Gost/PCT, PSB, CCC, NOM, TUV GS, FCC Class B/Canadian DOC, C-tick, MPR III, VCCI (class 2)	
Limited Warranty	4 years parts and labor, including backlight	4 years parts and labor, including backlight	
Technical Support	M - F (7am - 7pm CST)	M - F (7am - 7pm CST)	

* Color gamut size and coverage calculated as 2-D gamut area in CIE 1931 xy colorspace. Size is the total relative display gamut area and includes any colors outside the reference gamut. Coverage is the relative display gamut area contained inside the reference gamut. NTSC values provided for comparison purposes - modern broadcast video uses SMPTE-C, ITU-R BT, 709-5/sRGB or EBU primaries.

** AdobeRGB is a standard defined by Adobe Systems Incorporated.



MultiSync is a registered trademark, and AmbiBright, SpectraView, and XtraView+ are trademarks of NEC Display Solutions. All other brand or product names are trademarks or registered trademarks of their respective holders. Product specifications subject to change. 5/10 ver. 3.

©2010 NEC Display Solutions of America, Inc. All rights reserved.

NEC Display Solutions

500 Park Boulevard, Suite 1100
Itasca, IL 60143
866-NEC-MORE

NEC